



Rhythm Bee Charts

Chart 1

1



2



3



4



5



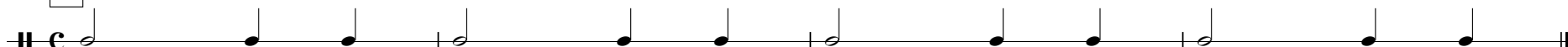
6



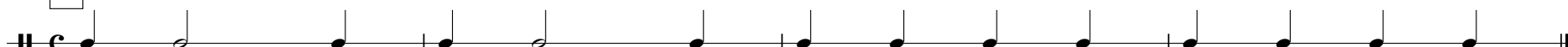
7



8



9

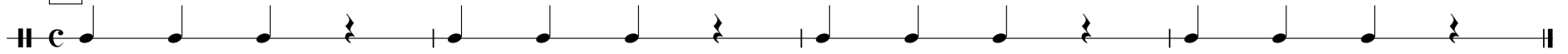


10

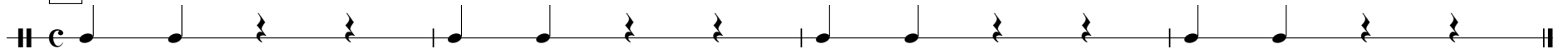


Chart 2

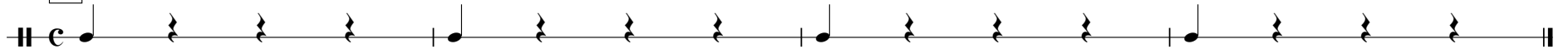
1



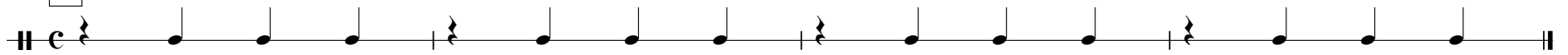
2



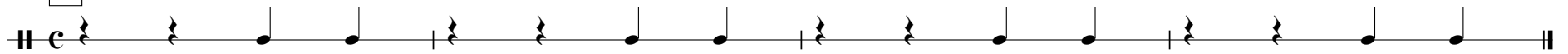
3



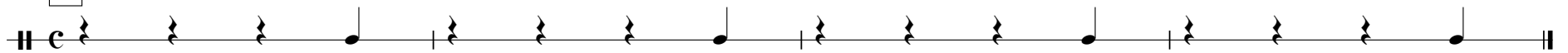
4



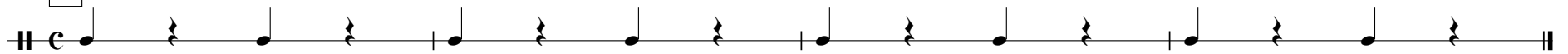
5



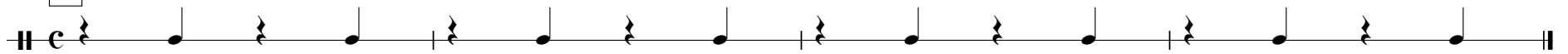
6



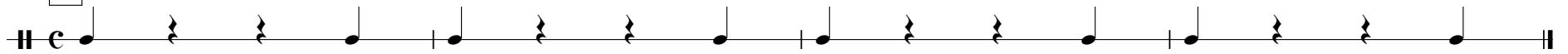
7



8



9



10

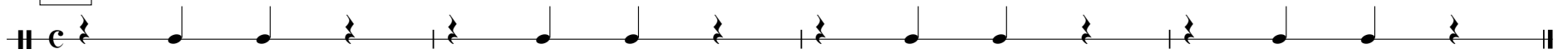


Chart 3

10 numbered musical staves in 3/4 time, each starting with a boxed number (1-10) and a treble clef. The notation includes various rhythmic patterns such as dotted half notes, quarter notes, eighth notes, and sixteenth notes.

10

11

12

13

14

15

16

17

18

19

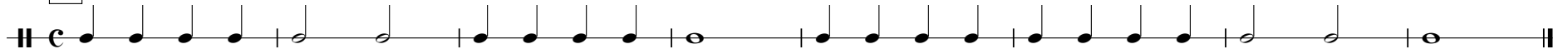
20

Chart 4

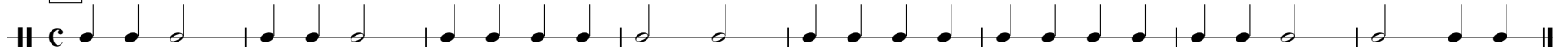
1



2



3



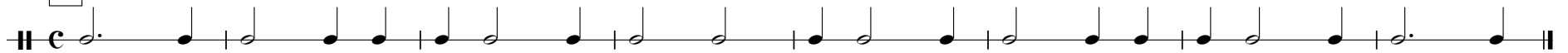
4



5



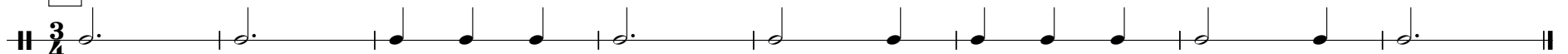
6



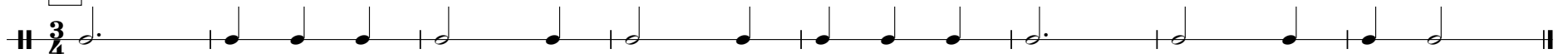
7



8



9

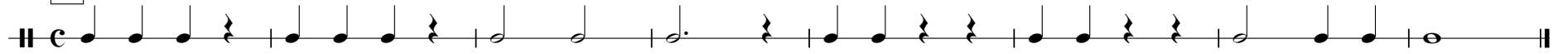


10



Chart 5

1



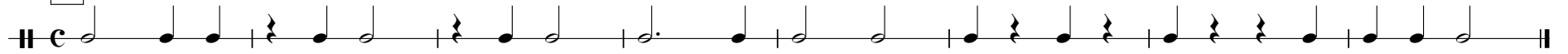
2



3



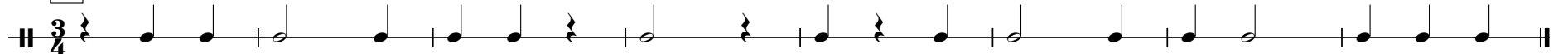
4



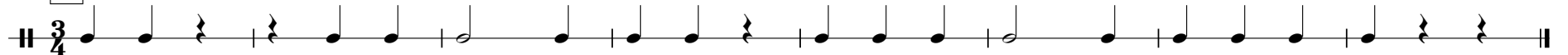
5



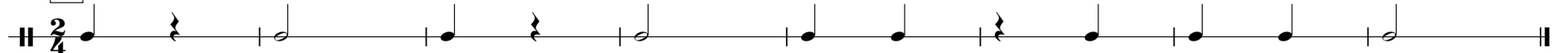
6



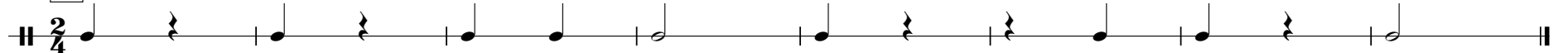
7



8



9



10

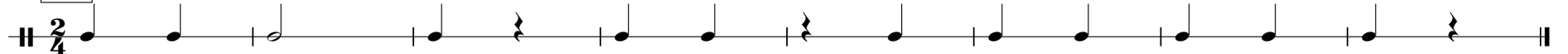
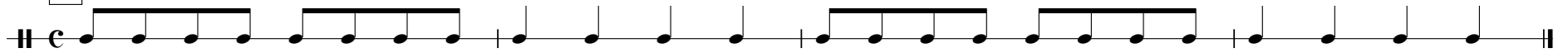


Chart 6

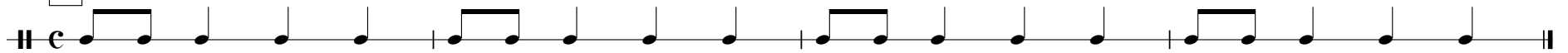
1



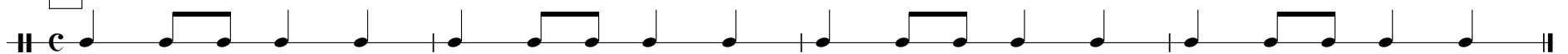
2



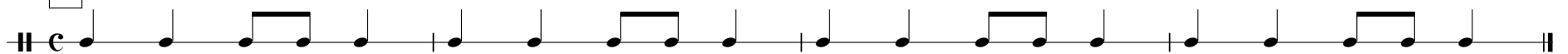
3



4



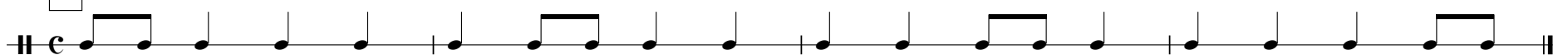
5



6



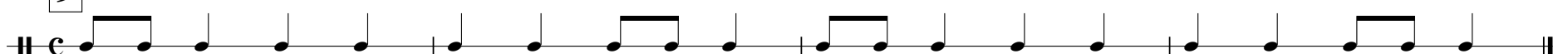
7



8



9



10

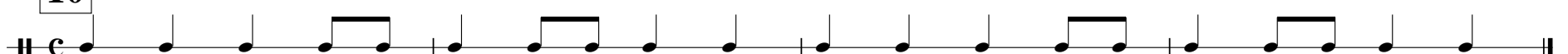
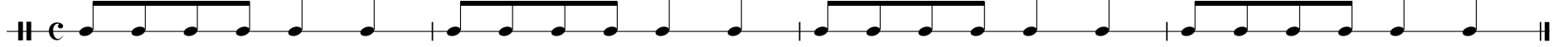


Chart 7

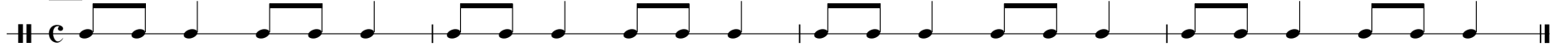
1



2



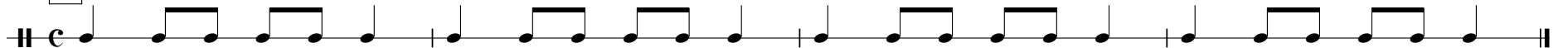
3



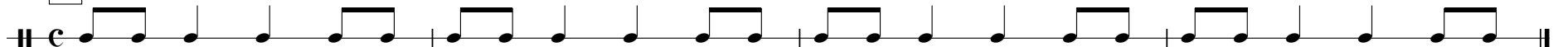
4



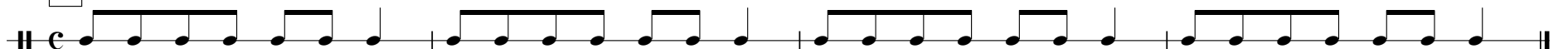
5



6



7



8



9

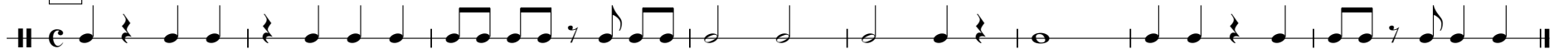


10



Chart 9

1



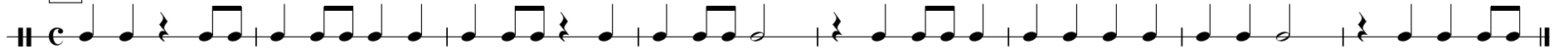
2



3



4



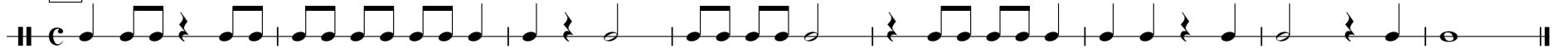
5



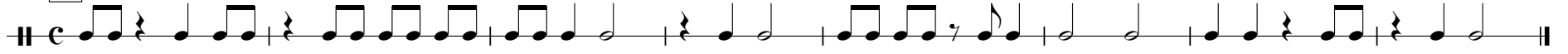
6



7



8



9



10



Chart 10

1



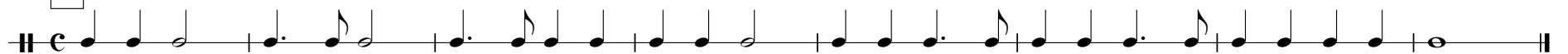
2



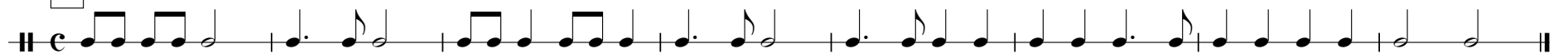
3



4



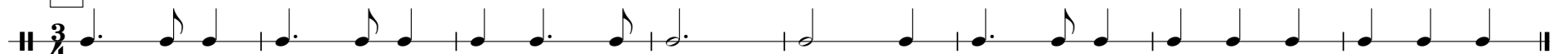
5



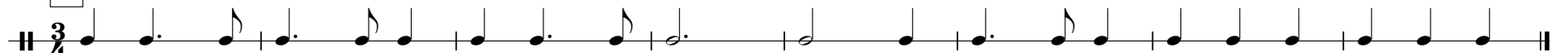
6



7



8



9



10

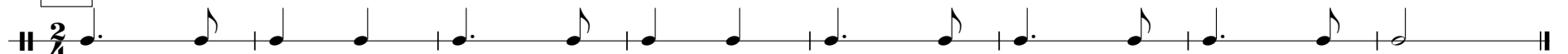


Chart 13

1



2



3



4



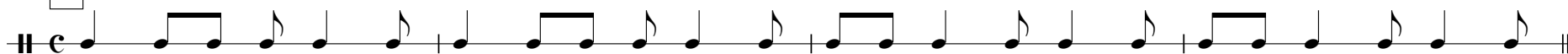
5



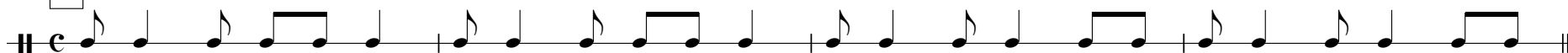
6



7



8



9



10



Chart 14

1

2

3

4

5

6

7

8

9

10

The musical score for Chart 14 consists of ten numbered staves, each beginning with a treble clef and a 6/8 time signature. The notation includes various rhythmic values such as dotted half notes, quarter notes, eighth notes, and beamed eighth notes. Some staves feature horizontal lines above the notes, likely indicating slurs or ties. The score concludes with a double bar line on the final staff.

